

Kurume History Walks

No.13 Stone Bridges in Kurume Kurume no ishibashi 久留米の石橋



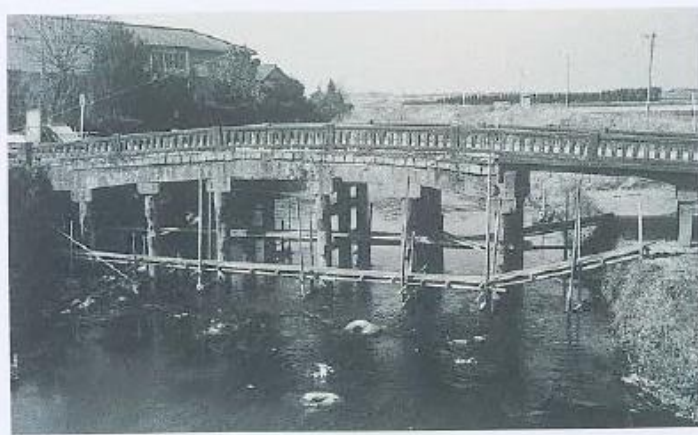
Ishiura-ohashi Bridge in Ohashi History Park

■ Ishiura-ohashi Bridge (石浦大橋; at Airaku Ohashimachi)

It was built in 1698, across the Kose River, which is a tributary of the Chikugo River, on the road from Kurume to Bungo Province. It is 15.90 meters long and 4.03 meters wide. The material is Yamakita Stone, which was brought from the Yamakita area of today's Ukiha City. According to the book "Travel in Chikugo" which was published in 1802, the deck used to be earth-paved on the logs.

They fixed it many times. An inscription on a central girder shows that the first repair was carried out in 1765. In the early twentieth century, they reinforced it with concrete. But in 1973, it was dismantled and removed because of the risk of flood damage, the difficulty of the road traffic, and the dangerous state caused by a broken girder. So, the bridge members came to be kept at Daizenji Temple.

In 1981 and 1988, the local citizens submitted their request about its reconstruction to the municipal government. They expected to make it a symbol of the area. In 1992, the consultation between both and the consideration concerning a place to rebuild it started. In 1998, after the research and the repairing works, the Ohashi History Park, in which the bridge was reconstructed, was opened to the public.



(昭和40年代の石浦大橋)

Ishiura Ohashi Bridge in 1965

「橋石柱
元禄十一(戊寅)十二月日建」

〔元禄11年〕
銘のある柱



Inscription of the first construction period: Built in December 1698



Access: 6 minutes' walk north from the bus stop "Airakudanchi-mae" of Nishitetsu Bus

■ Korasan Mitaraihashi Bridge (高良山御手洗橋; at Umegatani, Miimachi)

A stone bridge over the Mitaraiike Pond was built in 1803. It is 10 meters long, 4 meters wide, and made of Yamakita stone.

The pond is located at the foot of the Korasan Mountain, which has been a sacred place since ancient times. They also call it "the Hojoike pond", into which Buddhist monks released fishes in a ritual.

Once, it used to be marshy. And there used to be an earth-paved bridge. It is said that a new bridge, the present one, was constructed around 1726-35 (Kyoho Era), and a Buddhist scripture was buried as an offering at a little mound in the pond. Kurume Domain appears to have maintained it. An official book of the domains's history described that a wooden bridge was constructed in November 1772.



Korasan Mitaraihashi Bridge

Today's bridge has old ornamental railing tops (*giboshi*) which bear an inscription of “Korasan Mitaraihashi Bridge, in June 1773”. We presume that they were reused for handing down the history. They are precious properties made of gold-plated copper by the Ueki family, the government caster.

■ Stone Bridge of Gokoku-jinja Shrine (五穀神社の石橋; at Torihokamachi)

There is a stone arched bridge across the Hojo-ike Pond, in the precinct of the Gokoku-jinja Shrine which was established in 1749 by Arima Yoriyuki, the seventh lord.

It was almost the domain government which used to manage it, while local citizens donated the main hall, the worship hall and the bridge in 1808.

Originally 9.6 meters long and 2.8 meters wide, it became 11.5 meters long due to the reinforcement work. Stonemasons from the Nagano area of today's Yame City made this bridge with Nagano stone (Tuff stone). It proves their skill of bridge building.

The iron ornamental railing tops were donated after World War II.

It was designated a Municipal Cultural Property in 2000.



Stone Bridge of Gokoku-jinja Shrine



ACCESS to Korasan Mitarai-bashi Bridge:
10 minutes' walk east from the bus stop "Miimachi"
of Nishitetsu Bus.



ACCESS to Stone Bridge of Gokoku-jinja Shrine:
A short walk north from the bus stop "Gokokujinja" of
Nishitetsu Bus.

Cultural Properties Protection Department of Kurume
Address: 15-3 Jonan Kurume Fukuoka Japan 830-8520
Tel: 0942-30-9225
Translated in July 2020